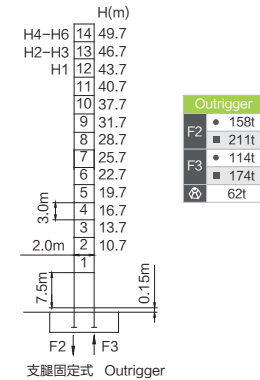
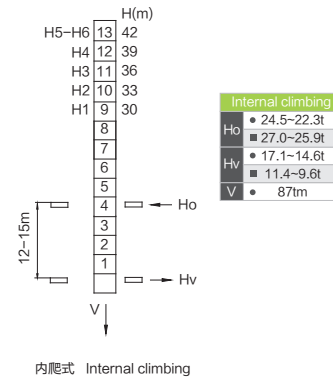
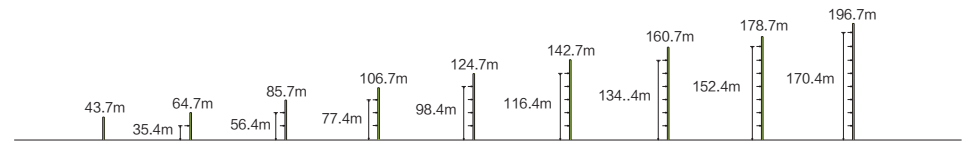


Jib Length (m)	Counterweight (t)	Height (m)	Weight (kg)	PHZ3250	PHZ4280
50m	7.5m	H1	17280	4	1
45m	7.5m	H2	17280	4	1
40m	7.5m	H3	17280	4	1
35m	7.5m	H4	17280	4	1
30m	7.5m	H5	17280	4	1
25m	7.5m	H6	14030	3	1

■ 塔身 Masts / 反力 Reactions / L160-12E

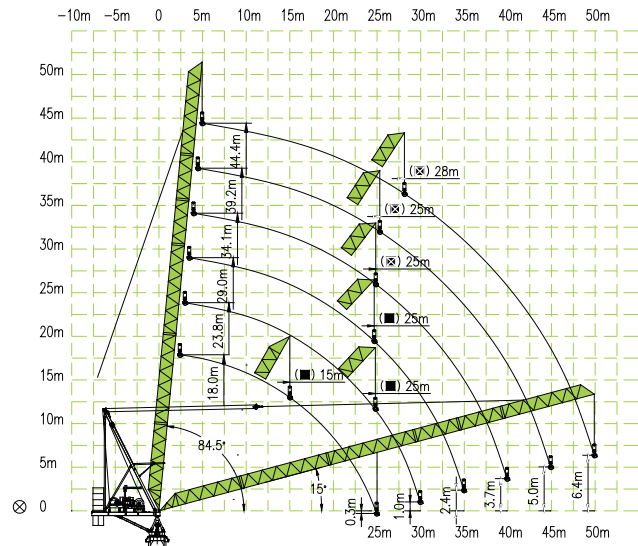


■ 附着 Anchorages / L160-12E



- 工作状态反力 Reactions in service
- 非工作状态反力 Reactions out of service
- ⊗ 独立高度、最大起重臂的自重 (不含平衡重、吊重和外爬升系统)  
Weight with max free-standing height, max jib (without counter-weight, load and external climbing system)

■ 起重臂 Luffing jib








■ 非工作状态最小幅度 Minimum radius out of service






■ 起重特性 Load diagrams

		Max Capacity m/t	23.0	25.0	28.0	30.0	33.0	35.0	38.0	40.0	43.0	45.0	48.0	50.0
50 (R=50.3)	☒	5.3~20.3/12.00	10.10	8.98	7.62	6.86	5.90	5.35	4.64	4.24	3.70	3.39	2.98	2.74
	☒	5.3~25.4/9.00	9.00		7.86	7.09	6.13	5.58	4.87	4.46	3.92	3.61	3.20	2.96
	☒	5.3~33.7/6.00	6.00				5.64		4.93	4.52	3.98	3.66	3.24	3.00
45 (R=45.1)	☒	4.8~20.5/12.00	10.26	9.14	7.78	7.02	6.07	5.53	4.84	4.44	3.93	3.65		
	☒	4.8~25.8/9.00	9.00		8.01	7.25	6.30	5.76	5.06	4.66	4.15	3.86		
	☒	4.8~34.3/6.00	6.00				5.82		5.12	4.71	4.19	3.91		
40 (R=40.2)	☒	4.3~20.5/12.00	10.42	9.32	7.96	7.22	6.28	5.75	5.09	4.73				
	☒	4.3~26.1/9.00	9.00		8.19	7.44	6.50	5.97	5.30	4.94				
	☒	4.3~35.1/6.00	6.00				5.35		4.99					
35 (R=35.2)	☒	3.8~20.6/12.00	10.46	9.38	8.08	7.36	6.47	6.01						
	☒	3.8~26.3/9.00	9.00		8.30	7.58	6.69	6.21						
	☒	3.8~35.0/6.00	6.00											
30 (R=30.2)	☒	3.3~20.7/12.00	10.58	9.54	8.30	7.67								
	☒	3.3~26.8/9.00	9.00		8.52	7.88								
	☒	3.3~30.0/6.00	6.00											
25 (R=25.2)	☒	2.8~21.0/12.00	10.62	9.57										
	☒	2.8~25.0/9.00	9.00											
	☒	2.8~25.0/6.00	6.00											

■ 传动机构A Mechanisms arrangement A

配置 Configuration		b			bb			bbb			kW		
		III	IV	V	III	IV	V	III	IV	V			
 起升 Hoisting	QPL12120A	m/min	0~48	0~96	0~120	0~32	0~64	0~80	0~24	0~48	0~60	60	600m ①(5 layers)
		t	6	3	1.5	9	4.5	2.25	12	6	3		
 回转 Slewing	HVV95F1.130 HVV95F2.130	r/min	0~0.7									2×95N·m	①超出咨询我们
 变幅 Luffing	BPL450A	m/min	1.7 (15° ~84.5°)									30	Consult us if overtop
	380V(±10%) 50Hz	60+2×5.5+45 kW											

■ 传动机构B Mechanisms arrangement B

配置 Configuration		b			bb			bbb			kW		
		III	IV	V	III	IV	V	III	IV	V			
 起升 Hoisting	H63FL30-1010D	m/min	0~53	0~106	0~160	0~35.5	0~71	0~106.50	26.6	0~53	0~80	63	600m ①(5 layers)
		t	6	3	1.5	9	4.5	2.25	12	6	3		
 回转 Slewing	HPW55F1.130B HPW55F2.130B	r/min	0~0.7									2×5.5 kW	①超出咨询我们
 变幅 Luffing	BPL450A	m/min	1.7 (15° ~84.5°)									45	Consult us if overtop
	380V(±10%) 50Hz	63+2×5.5+45 kW											

■ 运输单元 Packing list / 上装 Upper Parts / L160-12E

序号 No.	名称 Description	形状 Sketch	长 L(m)	宽 B(m)	高 H(m)	单件重量 Weight per Piece(t)	数量 Qty	序号 No.	名称 Description	形状 Sketch	长 L(m)	宽 B(m)	高 H(m)	单件重量 Weight per Piece(t)	数量 Qty
1	Jib I 臂节 I		10.15	1.49	1.45	1.36	1	5	Jib V 臂节 V		5.28	1.49	1.45	0.48	1
2	Jib II 臂节 II		10.40	1.49	1.87	1.10	1	6	Jib VI 臂节 VI		10.85	1.49	2.90	1.03	1
3	Jib III 臂节 III		10.40	1.49	1.45	0.90	1	7	Frontal-up strut and top-end pulley assembly (A-frame) 前上撑杆及 头部滑轮组 (A字架)		1.74	0.76	2.45	0.66	1
4	Jib IV 臂节 IV		5.28	1.49	1.45	0.48	1	8	Frontal-down strut (A-frame) 前下撑杆 (A字架)		11.32	1.63	0.48	1.43	1

■ 运输单元 Packing list / 上装 Upper Parts / L160-12E

序号 No.	名称 Description	形状 Sketch	长 L(m)	宽 B(m)	高 H(m)	单件重量 Weight per Piece(t)	数量 Qty	序号 No.	名称 Description	形状 Sketch	长 L(m)	宽 B(m)	高 H(m)	单件重量 Weight per Piece(t)	数量 Qty
9	Buffer (A-frame) 缓冲器 (A字架)		3.34	1.66	0.32	0.39	1	13	Slewing Mast 回转塔身		1.79	1.62	1.81	1.10	1
10	Diagonal strut (A-frame) 斜撑杆 (A字架)		5.41	0.16	0.25	0.22	2	14	Cabin 司机室		4.49	1.25	2.20	2.00	1
11	Back strut (A-frame) 后撑杆 (A字架)		10.62	0.14	0.25	0.37	2	15A	Luffing mechanism BP300 变幅机构		2.81	1.76	1.57	3.31	1
12	Slewing Assembly 回转总成		2.68	2.68	2.60	6.30	1	15B	Luffing mechanism 变幅机构		2.81	1.76	1.57	3.31 (含225m 钢丝绳重) (include 225m rope weigh)	1

■ 运输单元 Packing list / 上装 Upper Parts / L160-12E

序号 No.	名称 Description	形状 Sketch	长 L(m)	宽 B(m)	高 H(m)	单件重量 Weight per Piece(t)	数量 Qty
16A	Hoisting mechanism QPL1290 起升机构		3.16	1.96	1.63	5.00	1
16B	Hoisting mechanism 起升机构		3.37	2.03	1.63	6.166 (含1010m 钢丝绳重) (include 1010m rope weight)	1
17	Luffing pulley assembly 变幅滑轮组		1.14	0.61	0.58	0.12	1
18	Counter jib structure 平衡臂结构		7.82	1.71	1.08	3.52	1
19	Bottom strut of counter jib 臂节 V		10.15 10.40	1.49	1.45 1.87	1.36 1.10	1 1
20	Hook 吊钩		10.40	1.49	1.45	0.90	1
			5.28	1.49	1.45	0.48	1

■ 运输单元 Packing list / 下装 Upper Parts / L160-12E

序号 No.	名称 Description	形状 Sketch	长 L(m)	宽 B(m)	高 H(m)	单件重量 Weight per Piece(t)	数量 Qty
1	Climbing Frame 爬升架		7.23	2.40	2.40	2.71	1
2	Base Tower Section 基础节		7.76	2.08	2.00	4.12	1
3	Tower Section 标准节		3.26	1.99	0.60	1.17	12*
	Tower Section (Internal Climbing) 标准节 (内爬)						8*
4	Internal Climbing Reinforced Tower Section 内爬加强节		3.26	2.12	2.00	2.25	1
5	Internal Climbing Base Tower Section 内爬基节		3.26	2.08	2.23	3.88	1
6	Internal Climbing Frame (main beam) 内爬框主梁		2.78	1.09	0.74	1.27	3
7	Internal Climbing Frame (back beam) 内爬框后梁		2.78	0.89	0.40	0.59	3
8	Climbing Mechanism 顶升机构		1.93	0.27	1.42	0.48	1
9	Climbing Beam (Internal Climbing) 顶升横梁组件 (内爬)		1.93	0.27	3.09	0.50	1
10	Pump 泵站		0.66	0.55	1.00	0.23	1
11	Pump (Internal Climbing) 泵站 (内爬)		0.66	0.55	1.00	0.23	1