

75 ton capacity ZCC750V



ZOOMLION

4.0
PRODUCTS

ZOOMLION

Zoomlion Heavy Industry Science & Technology Co.,Ltd.

Add: No.677, Lugu Road, Zoomlion Industrial Park, Changsha, Hunan, China, 410205

Copyright©2021 Zoomlion. All rights reserved. Reproduction and copying of any part of contents is not allowed for any purposes without Zoomlion's approval.



Product specifications are subject to change without notice and obligation. The photographs and/or drawing in this document are for illustrative purposes only. Please consult your local ZOOMLION dealer for more information.
website:en.zoomlion.com 2021.01.25

VISION CREATES FUTURE

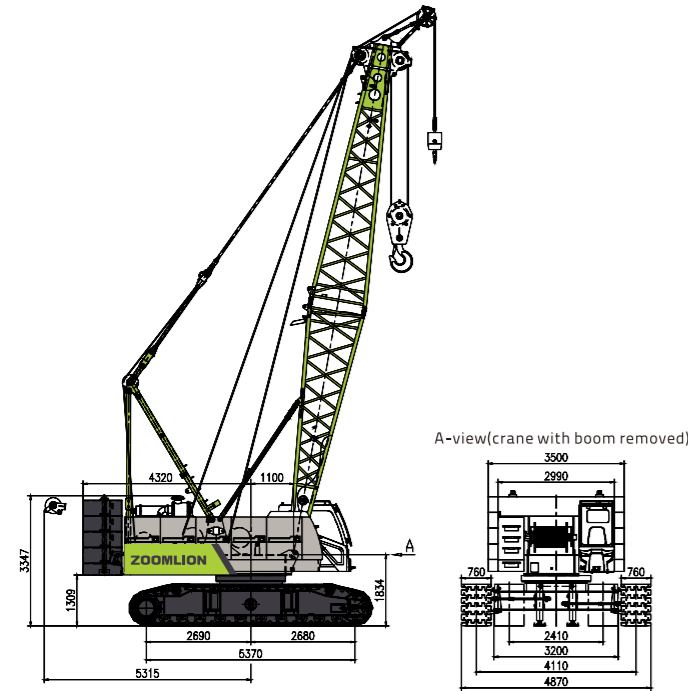
CONTENTS

ZCC750V DIMENSIONS	01
ZCC750V TECHNICAL FEATURE	01
ZCC750V BOOM COMBINATION	02
ZCC750V TRANSPORT DIMENSIONS AND WEIGHTS	03 / 06
ZCC750V TECHNICAL DESCRIPTION	07
ZCC750V LIFTING PERFORMANCE	08 / 12



DIMENSIONS

Basic machine with undercarriage



Operating weight

The operating weight includes the basic machine with crawlers, 2 main winches including wire ropes (230m and 150m) and 58m main boom, consisting of FA-frame, boom foot (6.5m), boom head(6.5m),23.7 t rear counterweight , and 85t hook block.

Total weight ----- approx.64t

Equipment

Main boom Max. Length ----- 58m

Fixed jib ----- 7-19m

Max. combination ----- main boom43 m

----- fixed jib 19m

Max. lifting moment ----- 300t.m

Max. lifting capacity on fixed jib ----- 15t

TECHNICAL FEATURE

High working efficiency

- Single rope speed of H1 and H2 reaches 136m/min (the 3rd layer).
- The optional free-fall winch helps to improve the efficiency of hoisting.

Optimization in transport and dismantling

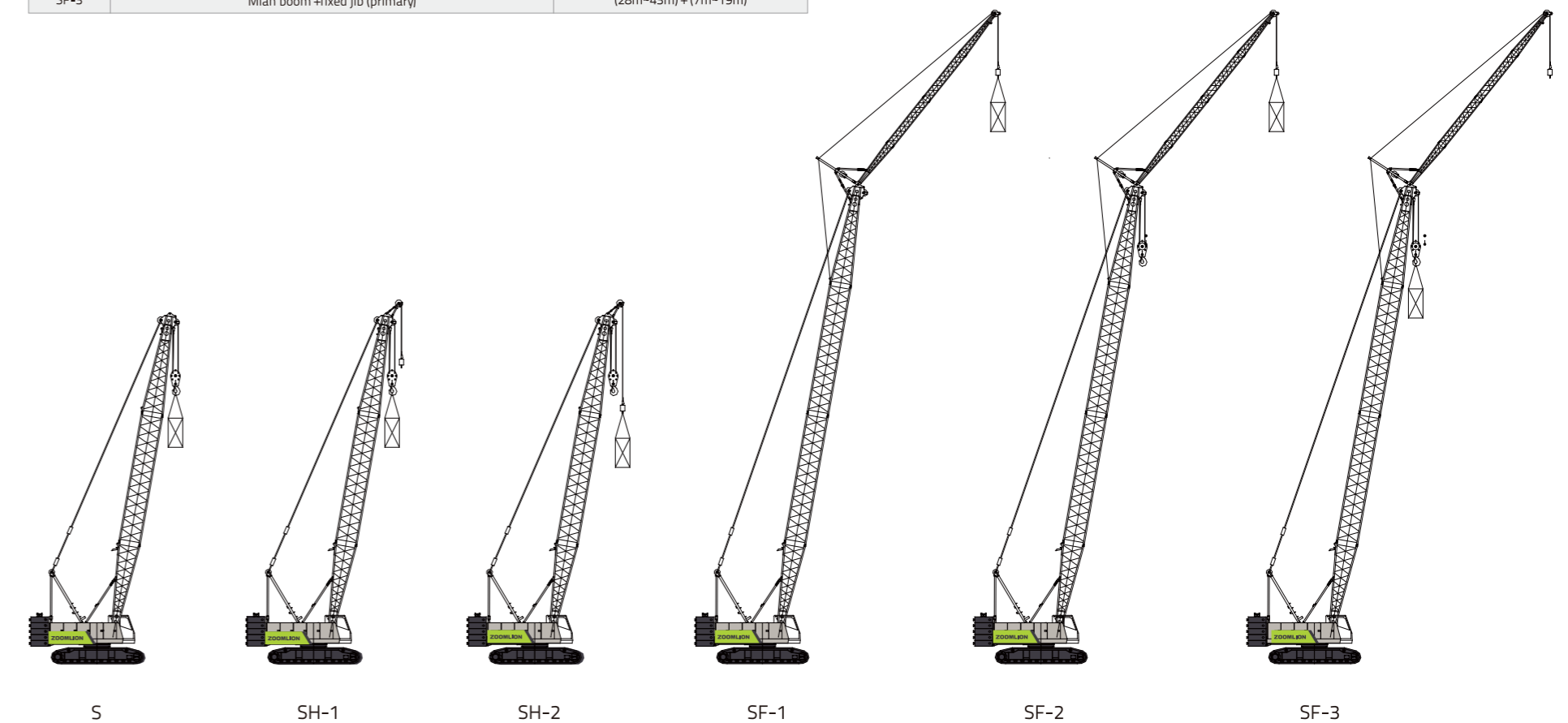
- Tracks are extendible. Max.width of whole machine in transportation is 3.2m,the width can reduce to less 3m after dismantling the tracks.
- The weight of a single counterweight plate shall not exceed 5.1t. A small auxiliary crane can help to finish the assembly.
- Optional vertical outriggers are convenient for the assembly and dismantling of track carrier.

Driver comfort

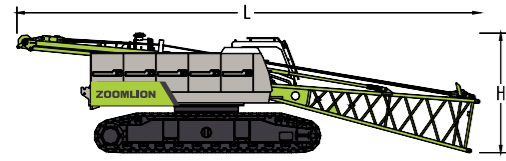
- The new cabin design sets new standards in terms of ergonomics and safety. Adjustable crane operator seat,adopts 10.4 inch touch sreen and camera monitor with excellent visibility with perfect all-round vision.

BOOM COMBINATION

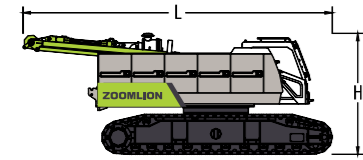
Code	Operating mode	Boom combination
S	Main boom	13m-58m
SH-1	main boom+tip boom (primary hook)	13m-58m
SH-2	main boom+tip boom (auxiliary hook)	13m-58m
SF-1	Main boom+fixed jib (auxiliary hook,without primary hook)	(28m-43m) + (7m-19m)
SF-2	Main boom+fixed jib (auxiliary hook with primary hook)	(28m-43m) + (7m-19m)
SF-3	Mian boom +fixed jib (primary)	(28m-43m) + (7m-19m)



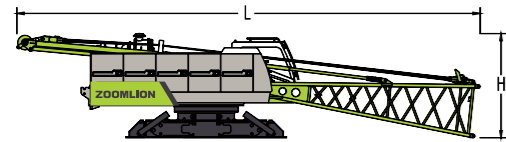
TRANSPORT DIMENSIONS AND WEIGHTS



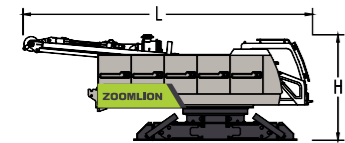
Basic machine 1 (with pivot section and tracks on)	1piece*
Length(L)	13000 mm
Width (W)	3200 mm
Height (H)	3340 mm
Weight	38140 kg



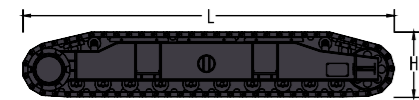
Basic machine 1 (with tracks on)	1piece*
Length(L)	8450 mm
Width (W)	3200 mm
Height (H)	3350 mm
Weight	37060 kg



Basic machine 3 (with pivot section on)	1piece*
Length(L)	13000 mm
Width (W)	2990 mm
Height (H)	2940 mm
Weight	22320 kg

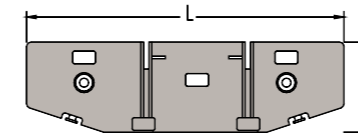


Basic machine 4	1piece*
Length(L)	8000 mm
Width (W)	2990 mm
Height (H)	2940 mm
Weight	21240 kg

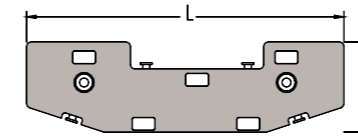


Track carrier assy	2pieces*
Length(L)	6255 mm
Width (W)	1015 mm
Height (H)	1074mm
Weight	7900 kg

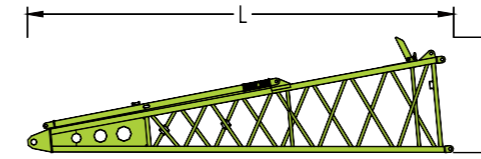
TRANSPORT DIMENSIONS AND WEIGHTS



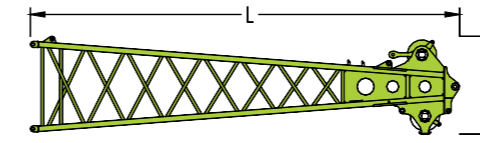
Counterweight base	1piece
Length (L)	3500 mm
Width (W)	1000 mm
Height (H)	560 mm
Weight	3300 kg



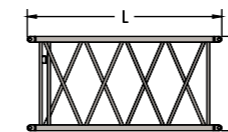
Counterweight plate	4pieces
Length (L)	3500 mm
Width (W)	1000 mm
Height (H)	450 mm
Weight	5100 kg



Main boom pivot section	1piece*
Length (L)	6700 mm
Width (W)	1690 mm
Height (H)	1800 mm
Weight	1080 kg

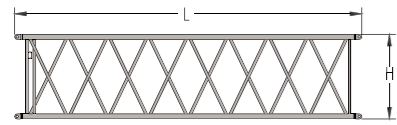


Main boom head	1piece
Width (W)	7130 mm
Height (H)	1690 mm
Weight	1630 mm
	1040 kg

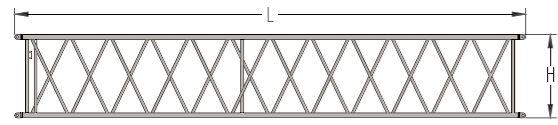


Main boom intermediate section of 3m	1piece*
Length (L)	3090 mm
Width (W)	1690 mm
Height (H)	1500 mm
Weight	260 kg

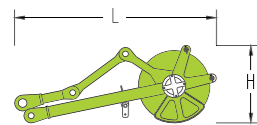
TRANSPORT DIMENSIONS AND WEIGHTS



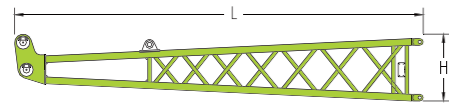
Main boom intermediate section of 6m	1piece*
Length (L)	6090 mm
Width (W)	1690 mm
Height (H)	1500 mm
Weight	440 kg



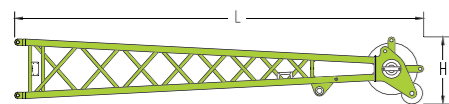
Main boom intermediate section of 9m	4piece*
Length (L)	9090 mm
Width (W)	1690 mm
Height (H)	1500 mm
Weight	640 kg



Tip boom	1piece
Length (L)	1390 mm
Width (W)	590 mm
Height (H)	540 mm
Weight	130 kg

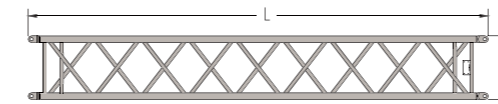


Fixed jib pivot section	1piece*
Length (L)	3640 mm
Width (W)	570 mm
Height (H)	570 mm
Weight	165 kg

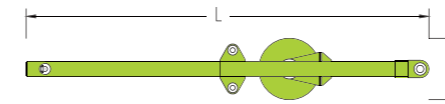


Fixed jib head	1piece*
Length (L)	3820 mm
Width (W)	570 mm
Height (H)	570 mm
Weight	220 kg

TRANSPORT DIMENSIONS AND WEIGHTS



Fixed jib intermediate section of 4m	3pieces*
Length (L)	4060 mm
Width (W)	570 mm
Height (H)	570 mm
Weight	120 kg



FA-frame	1piece*
Length (L)	3230 mm
Width (W)	730 mm
Height (H)	490 mm
Weight	255 kg



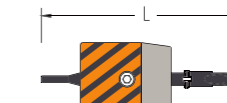
Load hook of 85T	1piece*
Length (L)	1800 mm
Width (W)	670 mm
Height (H)	660 mm
Weight	1195 kg



Load hook of 55T	1 piece*
Length (L)	1770 mm
Width (W)	585 mm
Height (H)	660 mm
Weight	925 kg



Load hook of 25T	1 piece*
Length (L)	1400 mm
Width (W)	520 mm
Height (H)	660 mm
Weight	613 kg



Load hook of 9T	1 piece*
Length (L)	955 mm
Width (W)	350 mm
Height (H)	350 mm
Weight	265 kg

Notes:

- 1.Components are presented in diagrammatic drawings that are not drawn to scale. Length is a boundary dimension.
- 2.Weight of packaging is not counted in the weight above, which might be different from the actual weight due to manufacturing error.
- 3.There might be improvements made on components listed above, resulting modifications in dimensions and weight. Actual products to be delivered shall prevail.
- 4.Numbers of components marked * are determined by the actual need.

TECHNICAL DESCRIPTION



Engine

Engine type ---- WEICHAI WP7G270E301
 Rated power ---- 199kW/2000r/min
 Maximum output torque ---- 1200N.m/(1200~1500)r/min
 Oil tank capacity ----- 400L
 Exhaust emissions: China national 3 emissin standaresd



Hydraulic system

Hydraulic pump: The main pump, a plunger pump, drives winches and the traveling mechanism. Dual gear pump is used for slewing and heat dissipation.
 Control: pilot proportional control hydraulic system. The motor of hoisting winches is a variable plunger pump. Two cross-shaped hydraulic control levers and a dual foot-operated traveling control valve are used for controlling different executive components.
 Hydraulic oil tank: 520L



Hoisting winch

Both the primary and the secondary hoisting winches are driven by an axial hydraulic variable-displacement piston motor through a built-in planetary reducer. Braking of the spring on winch motor is controlled by the balancing valve. The drum with a double-rope groove guarantees that rope of multiple layers will not intertwine together.

Main winch

Line pull ----- Max.8.5T
 Rope diameter ----- 24mm
 Rope speed ----- 0-136m/min
 Rope length ----- 230m

Aux winch

Line pull ----- Max.8.5T
 Rope diameter ----- 24mm
 Rope speed ----- 0-136m/min
 Rope length ----- 150m

Both hoisting winches with free-fall function is available for an option.



Boom winch

The derricking winch is driven by an axial piston motor through a built-in planetary reducer and brakes through the spring on the motor end.
 Cable drum lock: The winch is locked by ratchet wheel and ratchet pawl.Boom winch
 Line pull ----- Max.71KN
 Rope diameter ----- 20mm
 Rope speed ----- 0-82m/min
 Rope length ----- 130m

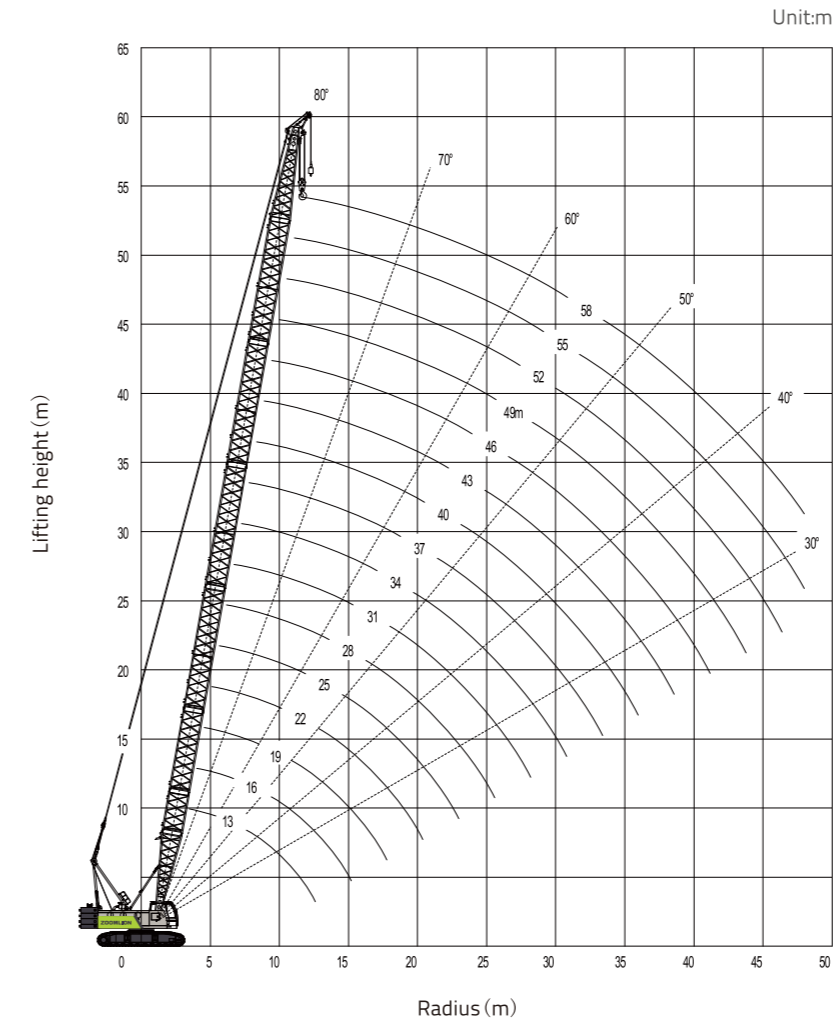


Swing

Slewing mechanism is composed of slewing reducer, motor, normally-closed brake, slewing bearing, etc. The superstructure can be rotated for 360°via the slewing ring which is driven by the pinion gear.
 Stepless speed regulation: 0-2.6r/min

LIFTING PERFORMANCE

Lifting height curves of main boom

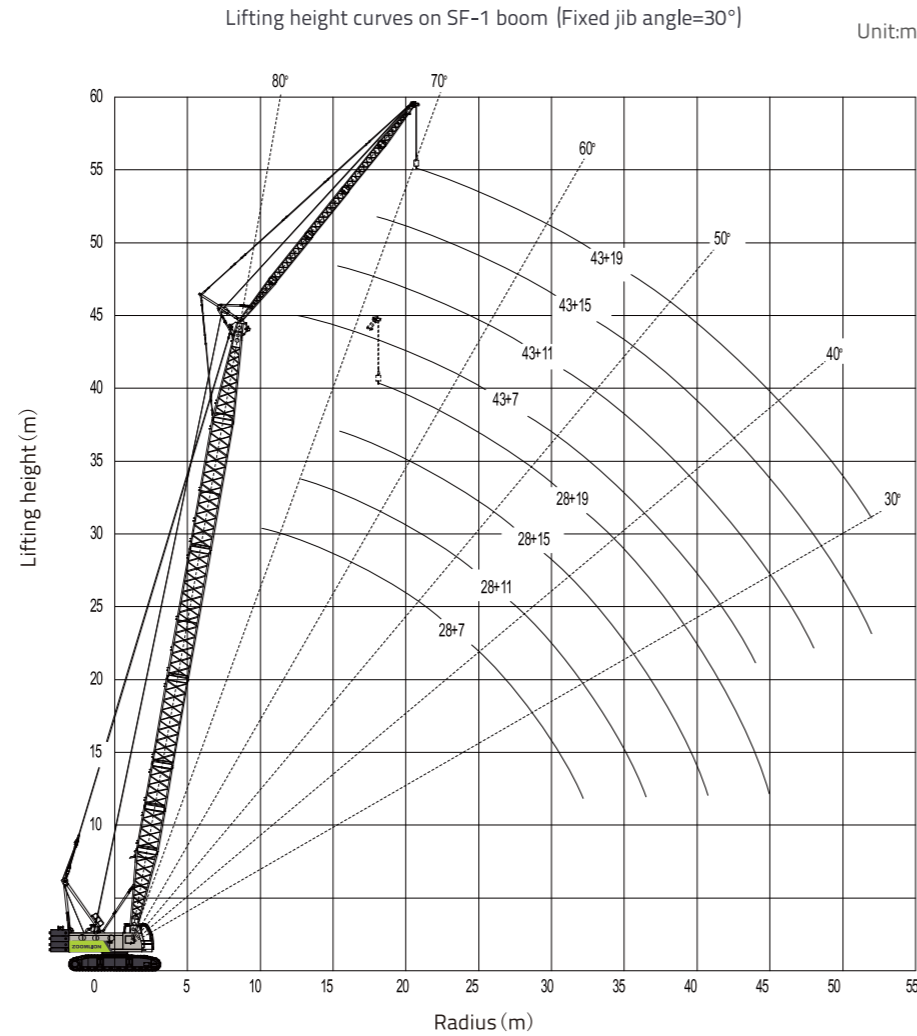
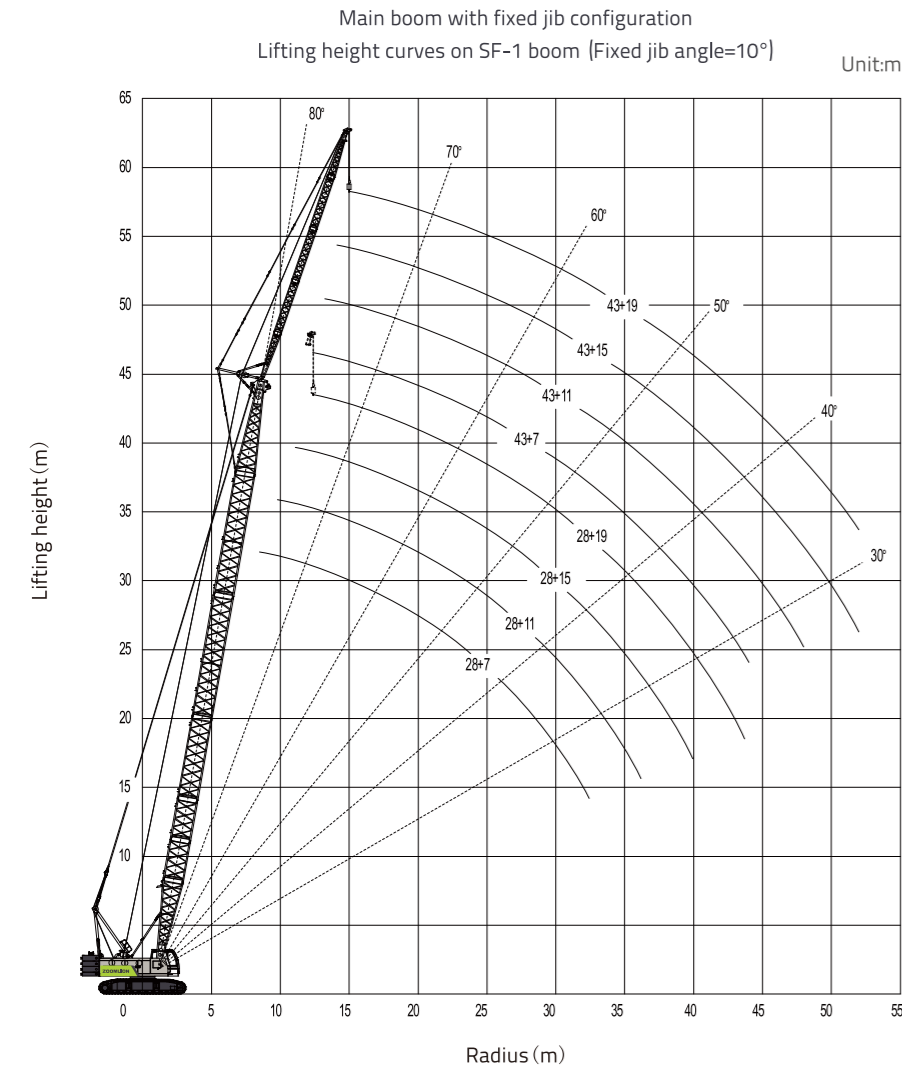


Unit:m

Unit:T

Radius (m)	Main boom length (m)																		
	13	16	19	22	25	28	31	34	37	40	43	46	49	52	55	58			
4	75																		
5	60	59.9	58.3																
6	45.4	44.9	44.8	43.8	42.8														
7	35.4	35.4	35.4	35.4	34.4	33.8	33.4	27.7											
8	29.3	29.3	29.3	29.3	28.9	28.6	28	23.9	27										
9	25.1	24.8	24.8	24.5	24.5	24.4	24.4	20.9	23.5	22.9	22.5								
10	21.6	21.3	21.3	21.3	21.3	21.3	21	18.3	20.3	19.9	19.7	19.4	18.7						
11	19.1	19.1	18.7	18.7	18.7	18.7	18.7	16.5	18.3	17.7	17.3	17.1	16.7	15.7					
12	17.1	16.7	16.7	16.7	16.7	16.7	16.5	13.4	16.3	16.1	15.7	15.5	15.1	14.5	14.1	13.9			
14		13.9	13.8	13.5	13.5	13.5	13.5	11.2	13.1	13.1	12.9	12.5	12.3	11.9	11.8	11.5			
16			11.5	11.5	11.3	11.3	11.3	9.6	10.9	10.9	10.9	10.7	10.3	10.2	10	9.7			
18				9.7	9.7	9.7	9.6	8.1	9.3	9.3	9.2	9.2	9	8.7	8.4	8.1			
20				8.6	8.5	8.4	8.4	7.1	8.1	8	8	7.7	7.7	7.6	7.4	7.1			
22					7.5	7.4	7.3	6.4	7.1	7	6.9	6.8	6.8	6.6	6.4	6.2			
24						6.6	6.4	5.7	6.3	6.2	6	6	5.8	5.8	5.7	5.4			
26							5.8	5	5.5	5.4	5.4	5.3	5.2	5	4.9	4.8			
28								5.2	4.6	5	4.9	4.8	4.7	4.6	4.4	4.4	4.2		
30										4.4	4.4	4.3	4.2	4.1	3.9	3.8	3.8		
32											4.1	3.9	3.8	3.7	3.6	3.6	3.4	3.3	
34												3.6	3.4	3.3	3.2	3.1	3	3	
36													3.2	3.1	3	2.9	2.8	2.7	2.6
38														2.8	2.7	2.6	2.5	2.4	2.3
40															2.4	2.3	2.2	2.1	2
42																2.1	2	1.9	1.7
44																	1.7	1.7	1.5
46																	1.6	1.5	1.4
48																		1.3	1.2
50																			1

LIFTING PERFORMANCE



LIFTING PERFORMANCE

Lifting capacity (SF-1 1/3)

Unit:T

Main boom length	28m								31m							
	7m		11m		15m		19m		7m		11m		15m		19m	
Angle	10°	30°	10°	30°	10°	30°	10°	30°	10°	30°	10°	30°	10°	30°	10°	30°
9	15															
10	15		13.8						15							
11	15	14.8	13.4						15		13.3					
12	15	14.2	13.2		8.8				15	14.6	13.1		9			
14	13.3	13.4	12.4	9.3	8.7		5.7		13.1	13.3	12.6	9.4	8.6		5.7	
16	11.1	11.3	11.1	8.7	8.4	6.7	5.5		10.9	11.1	11.1	8.9	8.3		5.6	
18	9.5	9.6	9.6	8.3	8	6.3	5.3		9.3	9.6	9.5	8.5	8.2	6.4	5.4	
20	8.1	8.2	8.2	7.9	7.7	6	5.1	4.5	7.9	8.2	8.1	8.1	7.8	6.1	5.2	4.5
22	7.1	7.3	7.2	7.4	7.3	5.7	5	4.4	6.9	7.1	7.1	7.4	7.1	5.9	5.1	4.5
24	6.2	6.2	6.4	6.6	6.4	5.5	4.8	4.3	6	6.2	6.2	6.4	6.2	5.6	4.9	4.4
26	5.5	5.6	5.6	5.7	5.7	5.3	4.7	4.2	5.4	5.5	5.5	5.7	5.6	5.4	4.8	4.3
28	4.9	5	5.1	5.2	5.1	5.1	4.6	4	4.8	4.9	4.9	5.1	5	5.2	4.7	4.1
30	4.4	4.5	4.5	4.6	4.6	4.8	4.5	3.9	4.3	4.4	4.4	4.6	4.5	4.7	4.5	4
32			4.1	4.2	4.2	4.3	4.2	3.8	3.9	3.9	4	4.1	4.1	4.2	4.1	3.9
34			3.7	3.7	3.7	3.9	3.7	3.6	3.5	3.5	3.5	3.7	3.7	3.7	3.7	3.7
36					3.3	3.5	3.5	3.5			3.2	3.2	3.3	3.4	3.3	3.5
38					3.1	3.1	3.1	3.2				2.9	3	3	3	3.2
40							2.8	2.9					2.7	2.8	2.7	2.9
42							2.6	2.7						2.5	2.5	2.6
44															2.3	2.3
46																2.1

LIFTING PERFORMANCE

Lifting capacity (SF-1 2/3)

Unit:T

Main boom length	34m								37m								
	7m		11 m		15 m		19 m		7m		11m		15m		19m		
Angle	10°	30°	10°	30°	10°	30°	10°	30°	10°	30°	10°	30°	10°	30°	10°	30°	
10	15																
11	15		13.7						15								
12	15	14.8	13.5						15		13.8						
14	12.8	13.3	12.8		8.5		5.8		12.6	12.8	12.6		8.5				
16	10.9	11.1	10.9	9.1	8.5		5.6		10.6	10.9	10.6	9.2	8.5		5.7		
18	9.3	9.5	9.3	8.6	8.2	6.6	5.4		9.1	9.3	9.1	8.7	8.4	6.7	5.5		
20	7.9	8.1	8.1	8.2	8	6.3	5.3	4.6	7.8	7.9	7.9	8.2	7.9	6.4	5.4	4.6	
22	6.9	7.1	7	7.3	7.1	6	5.1	4.5	6.8	6.9	6.9	7.2	7	6.1	5.2	4.5	
24	6	6.2	6	6.4	6.2	5.7	5	4.4	5.9	6	6	6.2	6	5.8	5	4.4	
26	5.3	5.4	5.4	5.6	5.5	5.5	4.9	4.3	5.2	5.3	5.3	5.5	5.4	5.6	4.9	4.4	
28	4.7	4.8	4.8	5	4.9	5.2	4.7	4.2	4.6	4.7	4.7	4.9	4.8	5.1	4.8	4.3	
30	4.2	4.3	4.3	4.5	4.4	4.6	4.4	4.1	4.1	4.2	4.2	4.4	4.3	4.6	4.4	4.2	
32	3.7	3.9	3.9	4	3.9	4.1	4	3.9	3.7	3.7	3.7	3.9	3.9	4.1	3.9	4	
34	3.3	3.3	3.5	3.5	3.5	3.7	3.5	3.8	3.2	3.3	3.3	3.5	3.5	3.7	3.5	3.7	
36	3	3	3.1	3.2	3.2	3.3	3.2	3.5	2.9	2.9	3	3.1	3	3.2	3.1	3.3	
38			2.8	2.8	2.9	3	2.9	3.1	2.6	2.6	2.7	2.8	2.8	2.9	2.8	3	
40			2.5	2.5	2.6	2.7	2.6	2.8			2.4	2.5	2.5	2.6	2.5	2.7	
42					2.3	2.4	2.4	2.5			2.2	2.2	2.2	2.3	2.3	2.5	
44					2.1	2.2	2.1	2.3					2	2.1	2.1	2.2	
46							1.9	2					1.8	1.9	1.9	1.9	
48								1.8							1.7	1.7	
50															1.5	1.5	

LIFTING PERFORMANCE

Lifting capacity (SF-1, 3/3)

Unit:T

Main boom length	40m								43m								
	7m		11 m		15 m		19 m		7m		11m		15m		19m		
Angle	10°	30°	10°	30°	10°	30°	10°	30°	10°	30°	10°	30°	10°	30°	10°	30°	
11	15																
12	14.7		8.5						8.5								
14	12.3	12.6	8.5		8.5				8.5	8.5	8.5		8.5				
16	10.4	10.6	8.5	8.5	8.5		5.7		8.5	8.5	8.5	8.5	8.5		5.8		
18	8.8	9.1	8.5	8.5	8.5	6.8	5.6		8.5	8.5	8.5	8.5	8.5		5.6		
20	7.6	7.9	7.6	8.1	7.6	6.4	5.4		7.4	7.6	7.4	7.9	7.4	6.5	5.5		
22	6.6	6.9	6.8	7.1	6.8	6.2	5.2	4.5	6.6	6.8	6.6	6.9	6.6	6.3	5.3	4.5	
24	5.7	5.9	5.9	6.2	6	5.9	5.1	4.5	5.7	5.9	5.7	6	5.7	6	5.2	4.5	
26	5.1	5.2	5.2	5.4	5.3	5.6	5	4.4	5	5.2	5.1	5.4	5.2	5.5	5.1	4.4	
28	4.5	4.6	4.6	4.8	4.7	5	4.7	4.3	4.4	4.6	4.5	4.7	4.6	4.9	4.6	4.4	
30	4	4.1	4.1	4.3	4.2	4.4	4.3	4.2	3.9	4.1	4	4.2	4.1	4.4	4.1	4.3	
32	3.5	3.7	3.7	3.7	3.7	4	3.7	4.1	3.5	3.5	3.5	3.7	3.7	3.9	3.7	4.1	
34	3.1	3.2	3.2	3.3	3.3	3.5	3.3	3.7	3	3.1	3.1	3.3	3.2	3.5	3.2	3.5	
36	2.8	2.8	2.9	3	3	3.1	3	3.2	2.7	2.8	2.8	2.9	2.9	3	2.9	3.2	
38	2.5	2.5	2.6	2.7	2.6	2.8	2.7	2.9	2.4	2.5	2.5	2.6	2.5	2.7	2.6	2.9	
40	2.2	2.3	2.3	2.4	2.4	2.5	2.4	2.6	2.1	2.2	2.2	2.3	2.3	2.4	2.3	2.5	
42		2	2.1	2.1	2.1	2.3	2.2	2.4	1.9	1.9	1.9	2.1	2	2.2	2.1	2.3	
44			1.8	1.9	1.9	2	1.9	2.1	1.7	1.7	1.7	1.8	1.8	1.9	1.9	2	
46				1.7	1.7	1.8	1.7	1.9			1.5	1.5	1.5	1.7	1.6	1.8	
48					1.5	1.5	1.5	1.7			1.4	1.4	1.4	1.5	1.4	1.5	
50						1.4	1.4	1.5					1.2	1.3	1.3	1.4	
52							1.2	1.3						1.1	1.1	1.2	
54								1.1							1	1	
56																0.9	