



ORMIG



10 tm

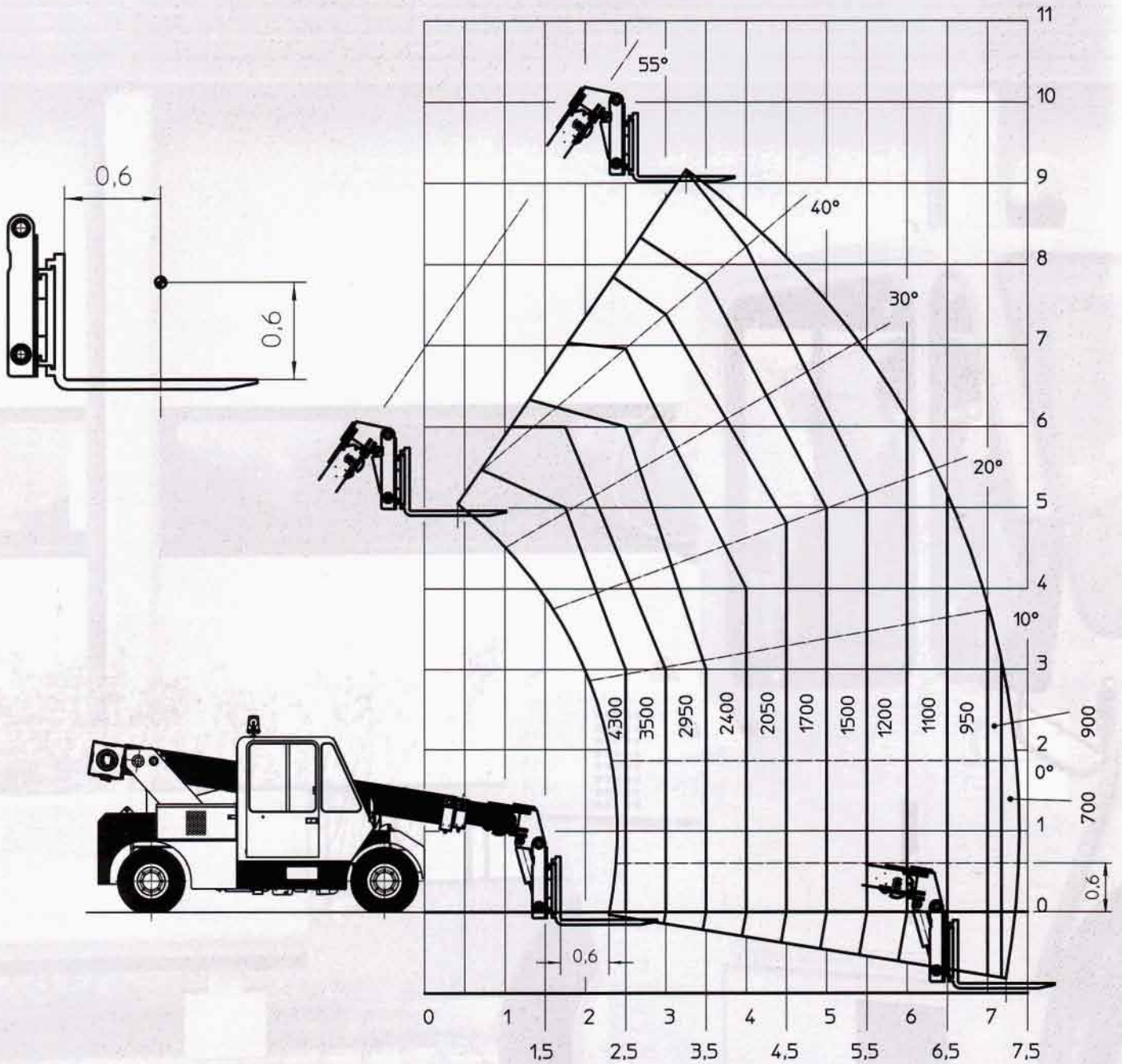
ORMIG S.p.A.

TEL. (+39) 0143 80051 r.a.
TELEFAX (+39) 0143 86568
E-mail: mktg@ormigspa.com
E-mail: sales@ormigspa.com
www.ormig.com - www.pickandcarry.com

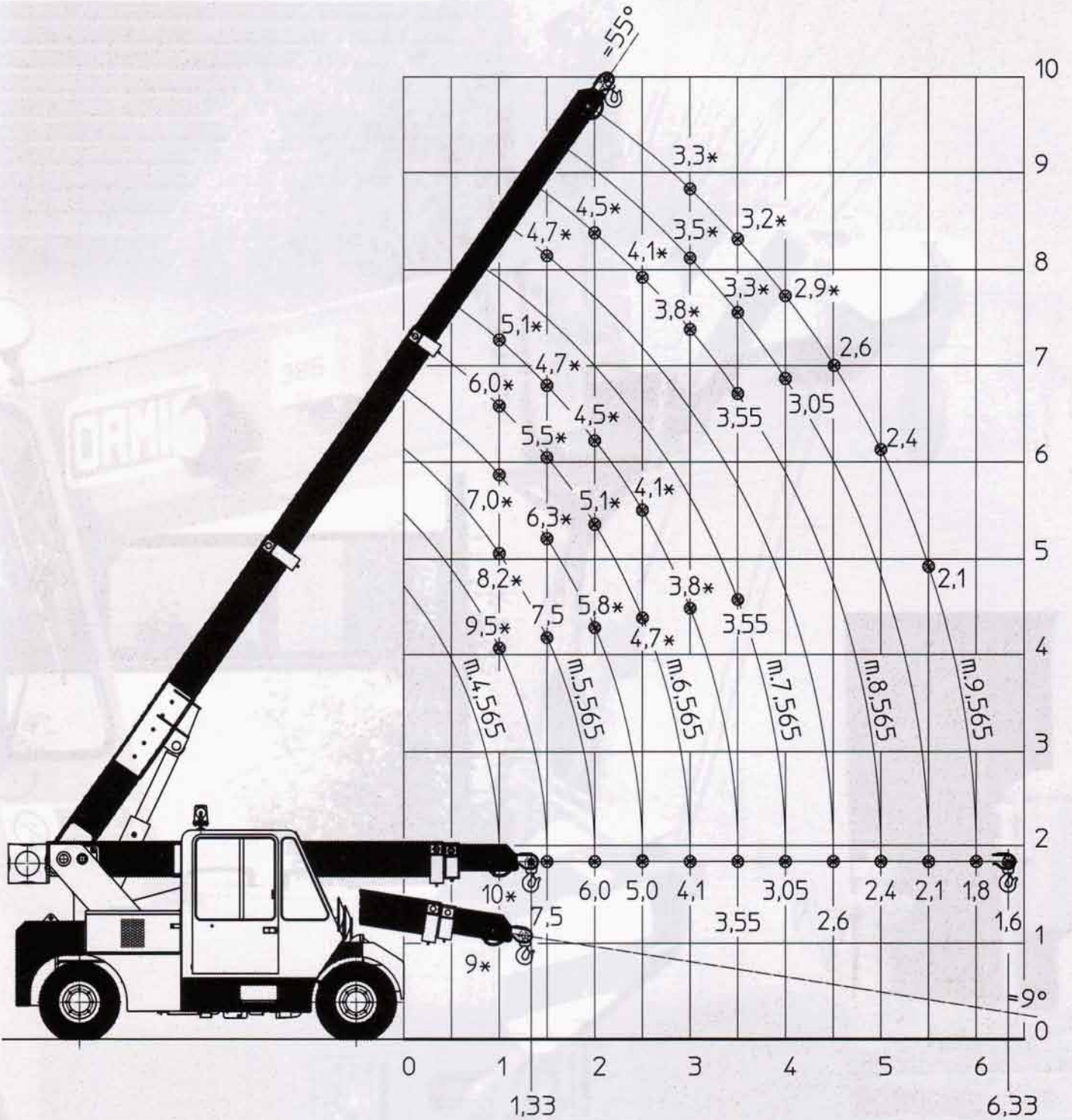
ORMIG S.p.A.
PIAZZALE ORMIG
P.O. BOX 63
15076 OVADA (AL)
ITALY

TECHNICAL FEATURES

Frame:	Rectangular pipes structure. Projected and manufactured by Ormig from high quality steel.
Engine:	Diesel - PERKINS 1104C-44, 4 cylindres, 4 strokes, 63 kW max power (85 HP) at 2300 rpm Fuel tank capacity: 160 litres.
Speed gearbox:	Torque converter, 2 forward and 2 reverse speeds.
Axles:	Front rigid driving axle. Steering rear axle with central swing.
Tyres:	8.25 – R15, 18PR double tyres at front axle and single at rear axle.
Steering:	Equipped with hydraulic pump, hydraulic steering and hydraulic cylinder with going through stem. Max. outer turning circle radius 4.13 m
Brakes:	In compliance with EEC regulations. Hydraulically operated service brake acting at front wheels, at foot pedal control. Spring type mechanical parking and emergency brake, acting at front wheels; hydraulic desengagement is provided with control from driving cab.
Driving place:	Dashboard with full instrumentation, controls and steering-wheel, with ergonomic seat and driver protection.
Electric system:	24 V - 55 A alternator - Starting motor - 2 batteries of 100 Ah
Boom:	Fabricated from plate at high strength. It is connected to the frame by means of the rear supporting parts. The boom is formed by a base section and two extensions at oleodynamic extraction through duple-action cylinder. Fix hook at boom top.
Hydraulic system:	Equipped with a 3-sections pump. Braking and locking valve on the boom and extentions cylinder. Calibrated valves on the distributors of the hydraulic system. Tank capacity 115 litres.
Safety regulations:	The crane is fitted with all safety devices as per regulations in force; it complies with safety and health rules as per Encl.1 of Machine Directive 89/392 and subsequent amendment. Therefore, the mark "CE" is provide on the crane equipped with the electronic safe load device.
Weight:	Total weight 9.950 Kg Front axle 3.100 Kg Rear axle 6.850 Kg
Equipment on request:	<ul style="list-style-type: none">• Electronic safe load device, active type, providing cut out of the controls which can cause dangerous conditions when the rated load is reached• Driving cab, complete with heater and windshied wiper• Winch with hook, rope, end of stroke and control• Special flyjibs• Spare wheel

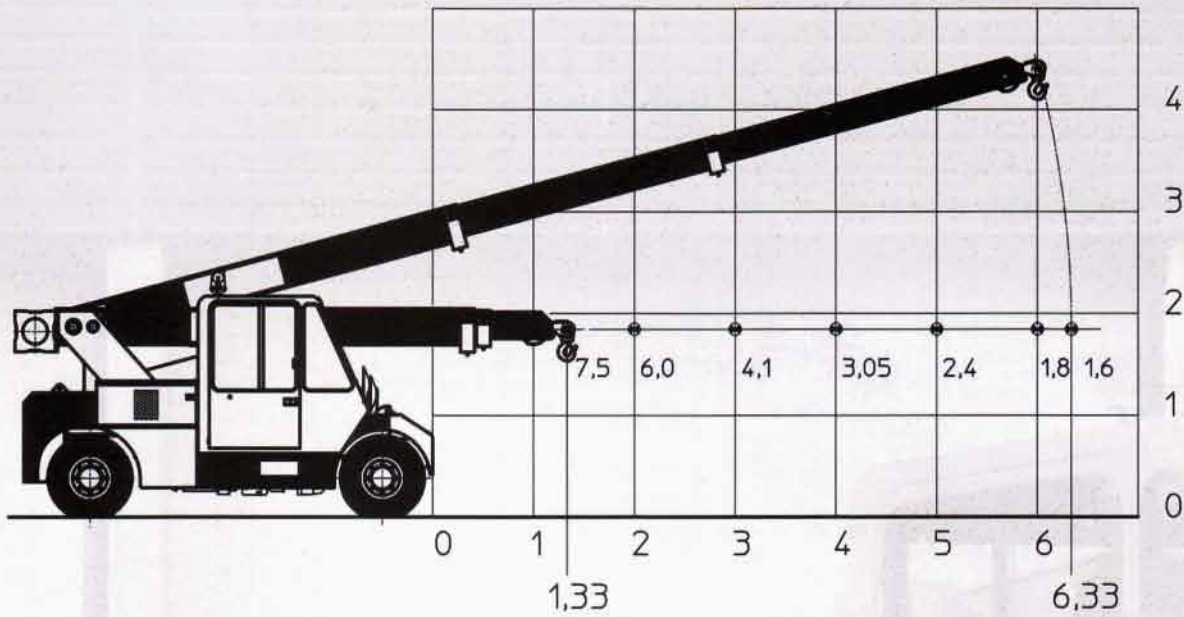


Lifting capacity chart (tonnes)

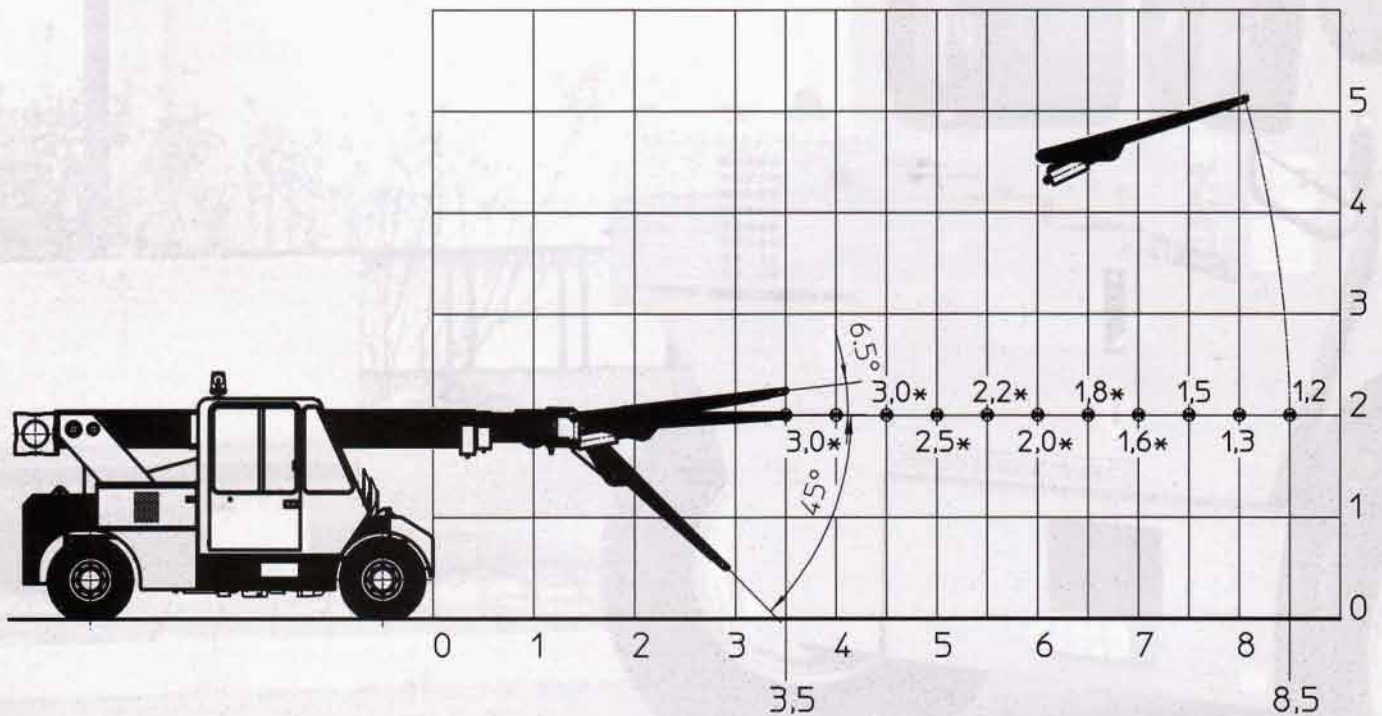


* Portate determinate da fattori diversi dal ribaltamento
 * Capacities determined by factors other than tipping load

Lifting capacity Chart with fix hooks (tonnes)



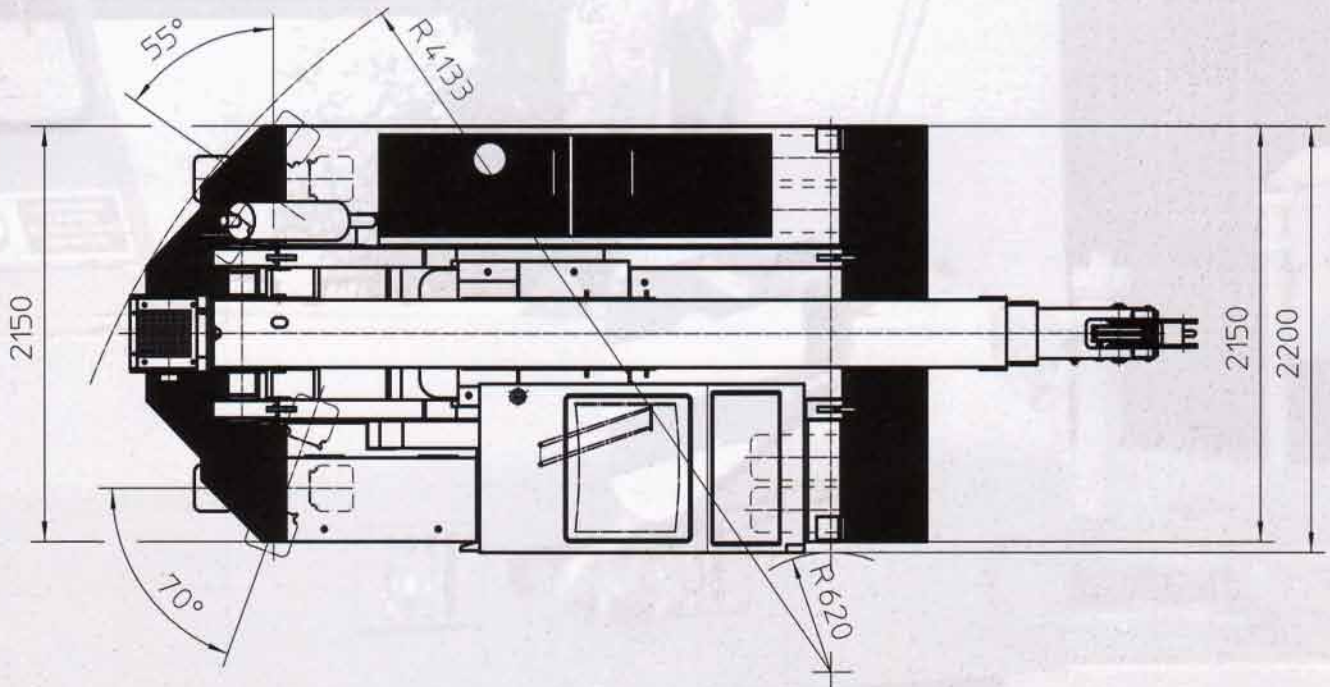
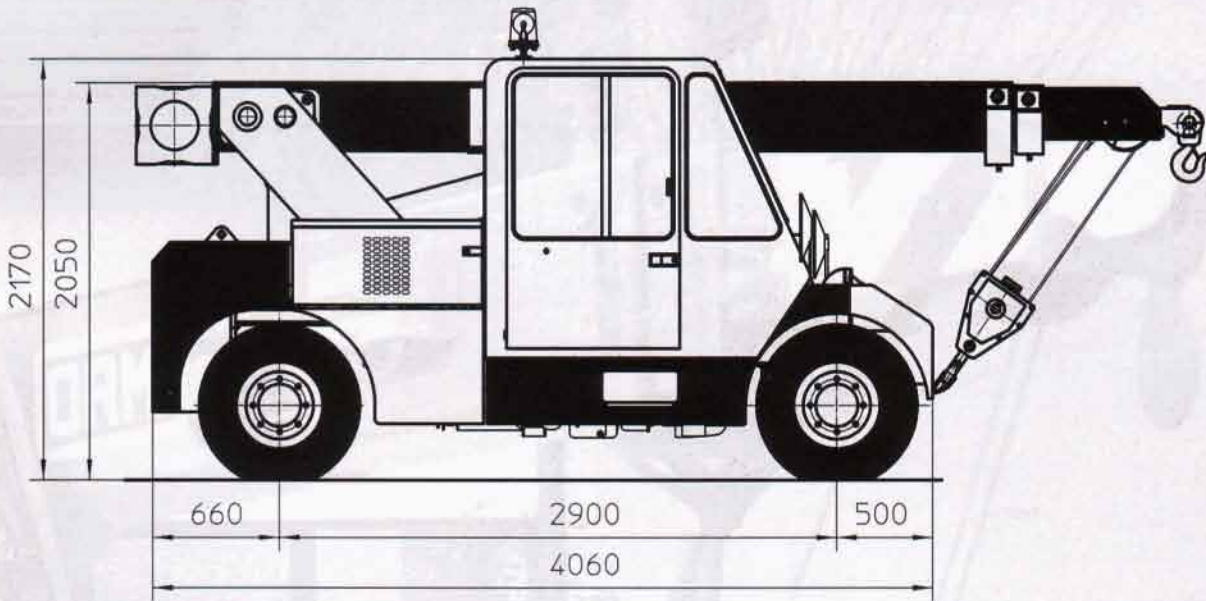
Lifting capacity Chart with fly - jibs (tonnes)



* Portate determinate da fattori diversi dal ribaltamento
 * Capacities determined by factors other than tipping load

Dimensioni Generali

General Dimensions





TEL. (+39) 0143 80051 r.a.
TELEFAX (+39) 0143 86568
E-mail: mktg@ormigspa.com
E-mail: sales@ormigspa.com
www.ormig.com - www.pickandcarry.com

ORMIG S.p.A.
PIAZZALE ORMIG
P.O. BOX 63
15076 OVADA (AL)
ITALY